

JUN_2019_REV_00

AIS KLIMA DIGITAL THERMOSTAT PROGRAMABLE 230V_WIRED

The AIS KLIMA digital thermostat wired is a high-quality room thermostat in modern design for the registration and regulation of the desired room temperature, offering maximum user comfort.

Allows individual temperature control per stay. In combination with the AIS KLIMA connection unit and thermostatic actuators, it achieves an ideal system for temperature control and energy saving in air-conditioned floor installations..

Simple room-by-room temperature control with directly connected actuators is now possible. In combination with the AIS KLIMA digital Basis direct connection unit, a perfectly adapted general system for adjusting the surface temperature can be realized.

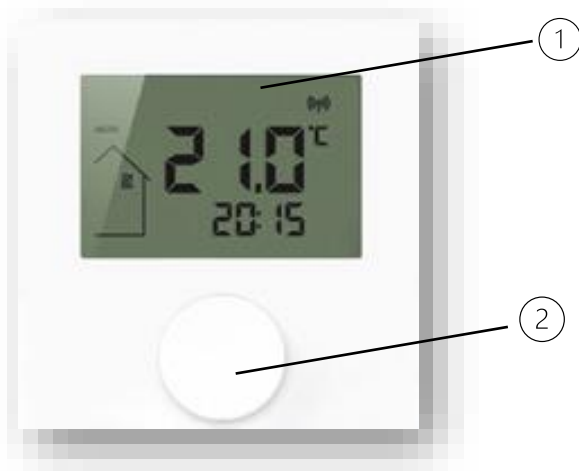


Adjusting the desired room temperature and configuring the system can be done conveniently using the rotary knob. The thermostat has a high quality digital display for perfect display of all icons.

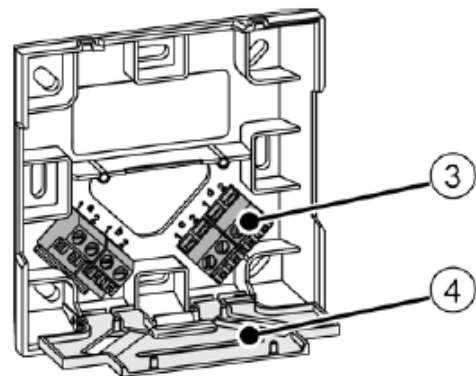
TECHNIC FEATURES:

- High reliability and functional safety.
- Backlit LD display.
- Slim Design (86 x 86 x 31 mm).
- High quality anti-scratch decorative panel.
- Cooling and heating mode.
- Smart Start/Smart Stop Function.
- Comfort programs for heating and cooling.
- Antifreeze and valve protection function.
- Power 230 V.
- Connection for external temperature sensor.
- Suitable for NC and NO operation.

FUNCTION - OVERVIEW OF THE DEVICE



Top view



Connections

1. Display

- Indication of all displays and menus.

2. Rotary Control

- Rotary-push mechanic system with ratchet.
- Operation and navigation through menus.
- Target temperature specification:
Setting the target temperature for the operating modes heating, cooling y day and night heating, cooling by night.

3. Connections terminals:

- Screw terminal for connection lines

4. Protective cover:

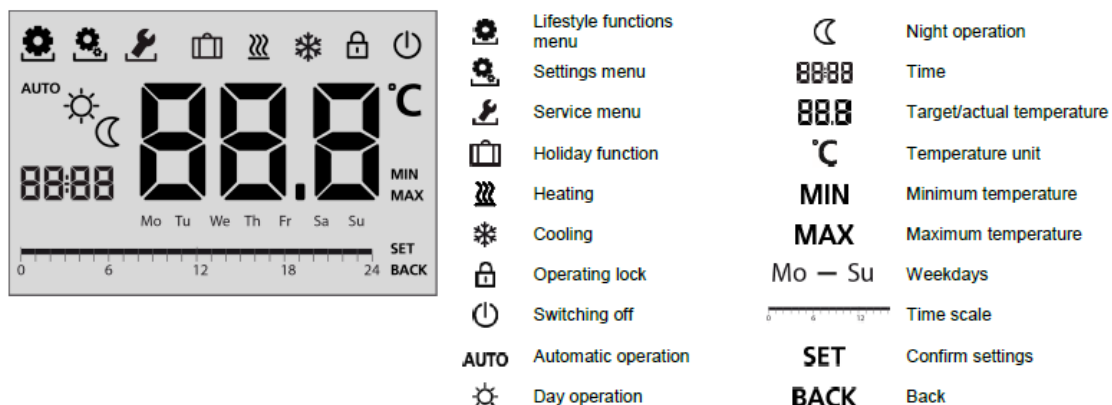
- Protection against accidental contact of live components

OPERATION:

Numerous system functions and parameters can be set via the Thermostat direct display AIS KLIMA for user comfort and for energy optimisation purposes. A multi-level menu structure avoids the unintended change of important settings. The user can make settings in the menus "Lifestyle functions" and "Settings". The menu "Service" is reserved for system settings; this level is only intended for expert technicians, and it is protected by a PIN code against unauthorized access.

DISPLAY:

Thermostat direct display AIS KLIMA of high quality has a clear and language-neutral indication. The high-quality display clearly indicates all symbols. The internationally understandable symbols guarantee intuitive operation.

AIS KLIMA THERMOSTAT STANDARD**NAVIGATION:**

The rotary control allows a setting of the desired room temperature and the operation of the comprehensive functions. Functions are selected by pressing and turning, and adapted according to the user's needs. The ratchet of the rotary control always delivers a feel of high quality experienced by the user during navigation. Depending on the variant, the following functions, settings and parameters are available in the individual menu levels.

AIS KLIMA THERMOSTAT

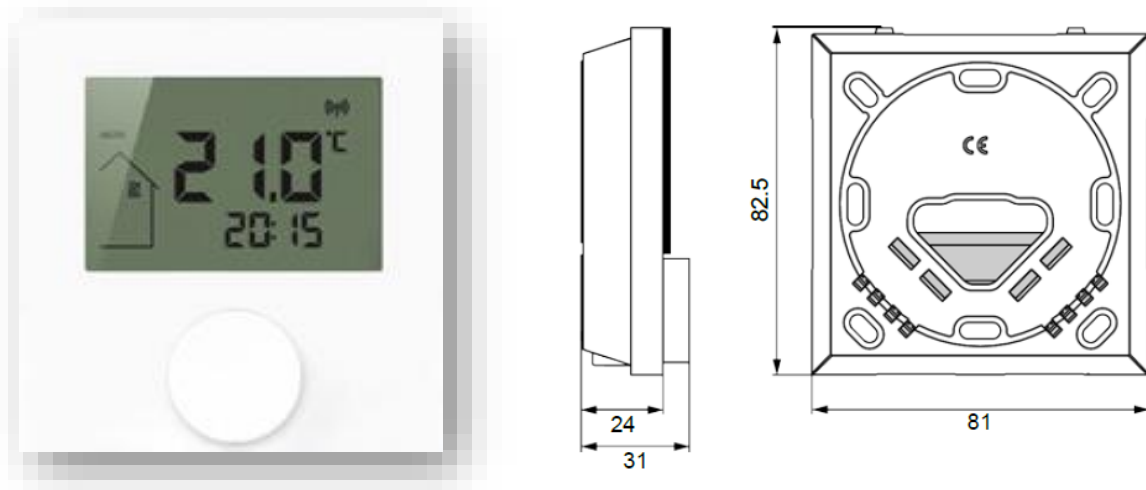
Lifestyle functions	Settings	Service
<ul style="list-style-type: none"> Operating modes Day operation, Night operation, Automatic operation Holiday mode for a reduction to a defined holiday temperature Operating lock as a protection against accidental maladjustment and wrong operation Switching off the room control unit and thus the control operation – the antifreeze operation is automatically activated Back to the basic level 	<ul style="list-style-type: none"> Separate selection of the target temperature for different operating modes as e. g. day/night operation and holiday mode Limitation of the lowest and highest selectable room temperature Setting time and date Comfort programs for individual weekdays, week, weekend, and week including weekend Correction of temperature registration Display illumination with brightness adjustment for background illumination Resetting the factory settings <p><small>*external floor sensor logged in</small></p>	<ul style="list-style-type: none"> Protected against unauthorised access by PIN code Individual, optimal adjustment of the installation via system parameters as e. g. <ul style="list-style-type: none"> Setting of the applied heating system as e. g. floor heating, radiator, convector etc. Blocking the switching outputs depending on the activated operating mode (heating/cooling) Deactivation of the valve protection function Activation/deactivation of Smart Start / Smart Stop function Definition of operating locks with/without PIN Change-over of the control direction of the installation (normally open/normally closed) Cooling block

TECHNICAL DATA:

The listed technical data relate to the maximum functional equipment of the Thermostat digital AIS KLIMA.

	230V Variant
	Control
Type	RD 25203-60
Operation Voltage	230 V $\pm 10\%$ 50 Hz
Voltage supply	Vías base /mains connection
Power reserve	10 hours
Switching element	Relay
Switching power	1 A ohmic load, 200 VA inductive
Fuse	T1AH

Rates current w/o valve drives	≤2 mA
Max current draw allowed with connected valve drives	1A
Control direction of actuator to be connected	NC/NO
Change-over input	Electronically
Cooling block	yes
Reduction input	-
Reduction output of weekly timer/switching current	si/100 mA
Reduction difference/ Reduction temperature	Adjustable Value for day and night temperature (heating and cooling)
Background illumination	yes
Connection line	NYM-J 5 x 1.5 mm ² /
Connection terminals	8 screw terminals 0.22 - 1.5 mm ²
Protection class	II
Type action	Type 2

DIMENSIONS:

Dimensions (all indications in mm)

APPROVALS & CERTIFICATES:

In addition to our numerous internal function and quality tests, all AIS products are tested by independent testing institutes.



The CE identification documents that the products that the products placed on the market comply with the applicable requirements of the EU Directives.

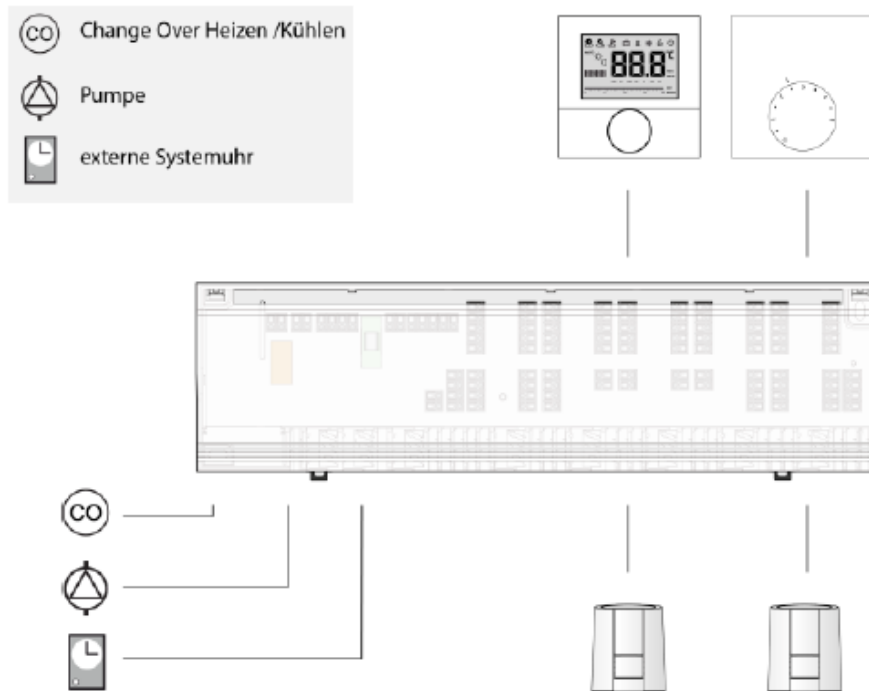


The product is certified by the TÜV Rheinland.

SYSTEM VISUALISATIONS:

- AIS KLIMA digital thermostat wired.
- Thermal actuator type A 20x05 (230 V). Power 1 watt.

AIS KLIMA DIGITAL THERMOSTAST WIRED WITH CENTRAL CONNECTION



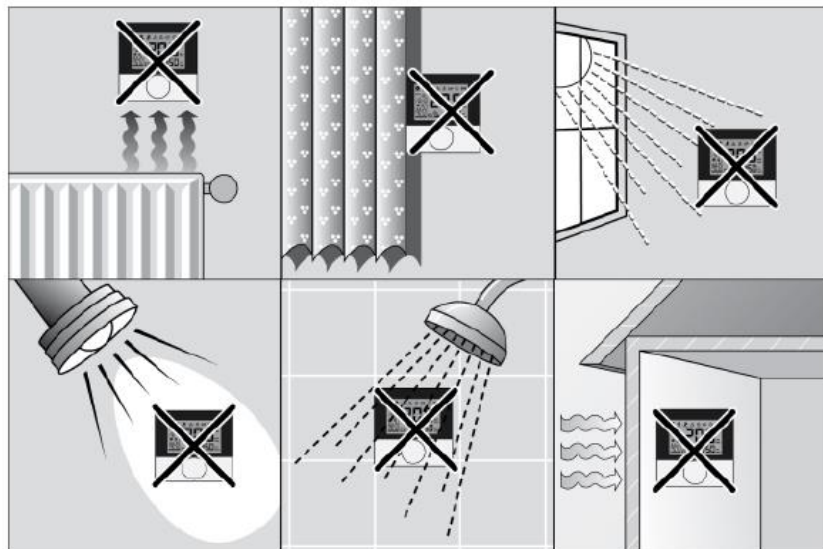
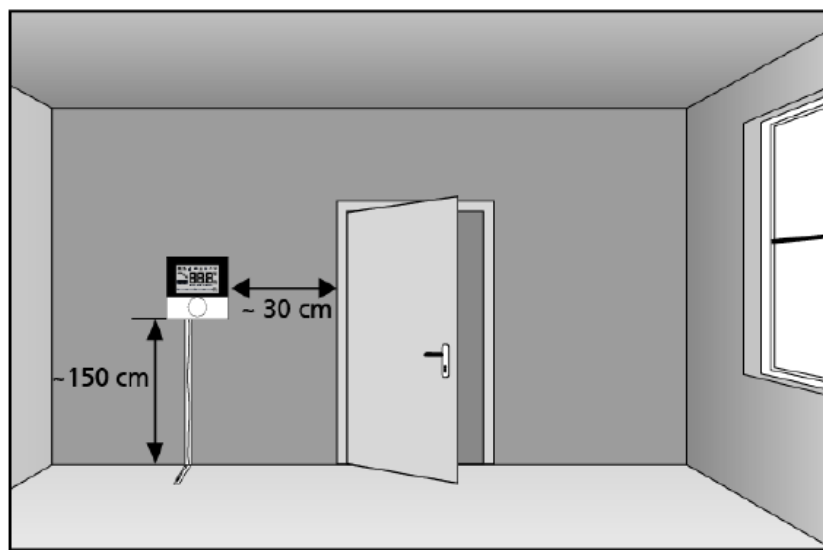
Characteristic:

Heating	✓
Cooling	✓
Simple pump control	
Extended pump/boiled control with lead time and follow-up time	
Connection for external system clock	
Internal weekly timer of AIS KLIMA digital thermostast display	✓ ¹
Temperature limiter or dew point sensor	
AIS KLIMA digital thermostat direct analogue	
AIS KLIMA digital thermostat directo analogue HK	
AIS KLIMA digital thermostat control direct control	✓

1 not in combination with external system clock

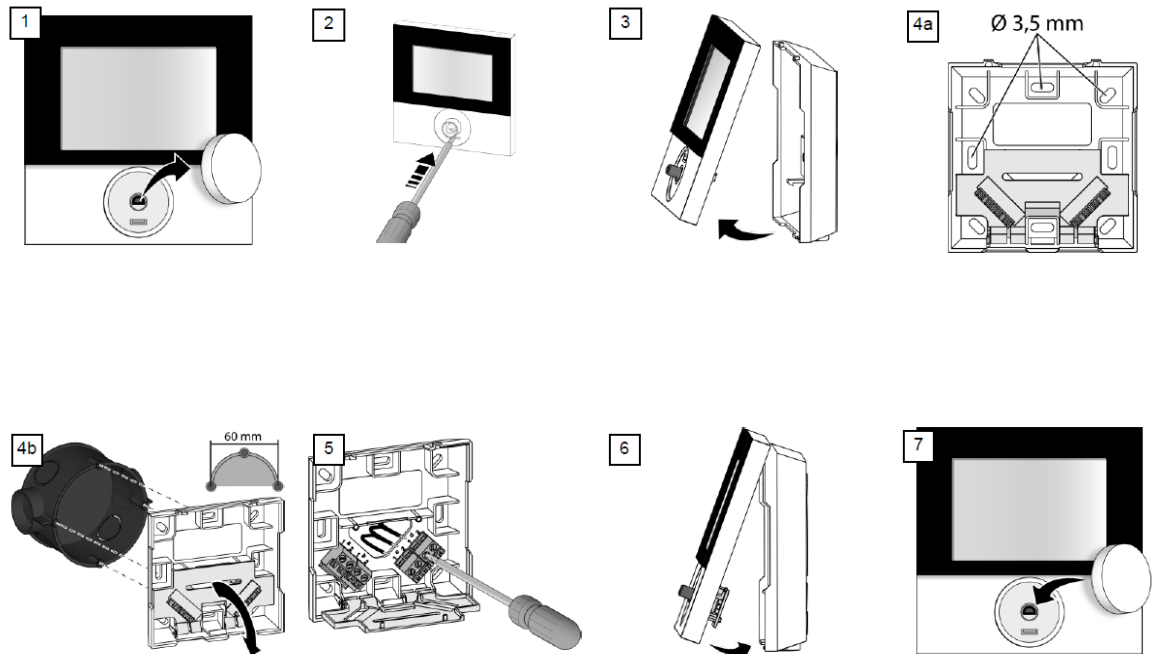
INSTALLATION PLACE:

A freely accessible area is recommended for installation in order to allow AIS KLIMA digital thermostat display to detect the correct room temperature. There must be no obstacles and additional heat sources at the installation position which could affect the measuring of the exact room temperature.



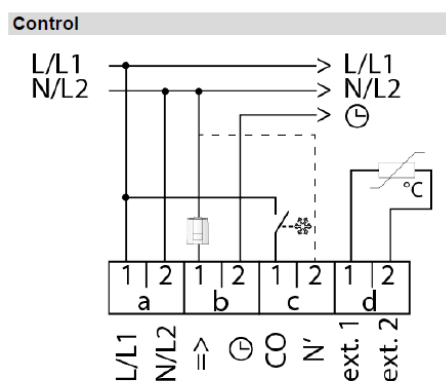
INSTALLATION:

The AIS KLIMA digital thermostat display is installed comfortably on-surface or in a flush-type box in a few simple steps.



ELECTRIC CONNECTION:

The wiring between the AIS KLIMA digital thermostat display wired and the components to be connected is realised with a multi-core cable.



• Mains connection:

- Voltage supply via AIS KLIMA digital thermostat display or via a separate voltage source.

- Forwarding of the switching signals of the internal weekly timer to other components of the AIS KLIMA digital thermostat display.
- Change over input: Toggle between heating and cooling via an external signal (potential-free contact).
- Connection for actuators:
 - EI The neutral conductor can be wired directly from the supply or via the internal connection terminal "N". In the wiring diagrams, the wiring via the connection terminal "N" is identified with a fine dashed line.
 - Integrated valve protection function. A cyclic activation of connected actuators once every 14 days for 10 minutes prevents the valves from clogging during periods without temperature regulation. Will be triggered once every 14 days for 10 minutes after the last triggering.
 - Integrated antifreeze function. Avoids the freezing of lines during times without temperature control (e.g. in case of longer absence). Inactive in cooling operation.
- Connection of external sensor:
 - For monitoring the room or floor temperature, and minimum floor tempering.