

AIK KLIMA

The most auto
adhesive system
on the market

AIK

2021

NEW UNDERFLOOR HEATING BUDGET CALCULATION TOOL



You can make a budget in 6 easy steps.



Consult the list of the budgets made.



Consult the price catalog.



Accessible from any device.



Click and try it!

www.multitubo.es/sueloradiante

We develop the safest,
most efficient and
complete solutions on
the market.



INDEX

8 AIS KLIMA Underfloor heating system

6 AIS Klett Auto-adhesive system

- 8 AIS Klett Insulation panel
- 8 AIS Klett Pipe

9 AIS KLIMA Nubs panel system

- 9 AIS nubs insulation panel
- 10 AIS KLIMA Pipe

11 AIS KLIMA Electric system

- 11 Electric Radiant Floor

12 AIS KLIMA Common elements

- 12 Control
- 14 Manifolds and manifold wall cabinets
- 16 Installation accessories
- 17 Hydraulic Regulation
- 17 Tools

18 AIS Support

AIS KLIMA

The most advanced solution

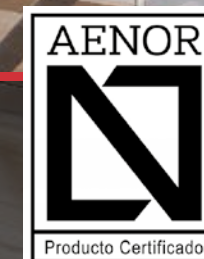
Even the best products can be perfected. That is why at AIS we have researched and innovated for years to achieve this.

AIS KLIMA is the most competitive underfloor heating solution on the market that offers important advantages for the professionals:

- For installers, because **AIS Klima Klett pipe**, with its self-adhesive velcro taping, is more flexible and allows better fixation.
- For **specifiers and designers**, because the system meets the thermal insulation requirements of the UNE 1264 standard and allows meeting the CTE's acoustic insulation standards.
- For **construction managers**, because the ease, quick and cleanliness of assembly considerably reduces times on site.

AIS KLIMA IS THE MOST COMPETITIVE UNDERFLOOR HEATING SOLUTION ON THE MARKET

- It is a complete system consisting of the solutions in **underfloor-cooling high performance**, which are integrated to achieve a comfortable, safe and energy efficient installation.



Our underfloor heating system
AIS KLIMA KLETT
certified by AENOR
001/007278 and 001/007279



AIS Klett Auto-adhesive System



Our AIS Klett system is the most self-adhering system with the possibilities for construction and rehabilitation projects.

Panel AIS Klett Autoadherente

It is a **smooth compact panel based on insulating materials** (EPS and graphite), with a thin fiber sheet in the surface area that allows the Klett pipe to be fixed by simple contact. The panel is supplied in rolls for quick installation.

- Fiber sheet on the smooth plate, **with installation guide-grid**, resistant to tearing and work processes. It allows a **quick layout of the pipes and a flexibility of the circuit design**.
- **Rolled panel** for quick placement on the surface, **reducing installation time and optimising labour cost**. The panel can be easily cut and adjusted to the perimeter of the room.
- **Thermal insulation**: graphite improves insulating capabilities allowing high performance with reduces thickness.
- **Acoustic insulation**: the benefits of Dynamic stiffness, compressibility and thickness makes it possible to comply with the regulations on air noise and impact insulation.
- **Low thickness design**: with a thickness of only 25mm, it allows maximum use of the available height. **Suitable for new construction or reform, both residential and construction..**
- **Suitable for new construction or renovation**, both in residential construction and tertiary use.



Quick and comfortable installation



Tool free

Suitable for installation by a single fitter.



Free design

Free design of the circuits and the distance between the tubes.



Easy change and correction of circuits



Valid for all types of works

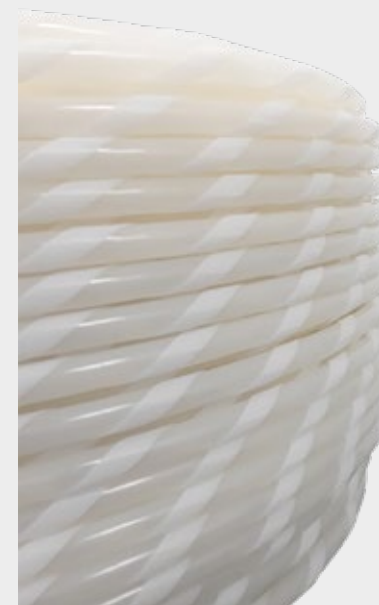
In single-family and high-rise houses, as well as hotels, offices and other buildings for tertiary use.

AIS Klett Auto-adhesive panel

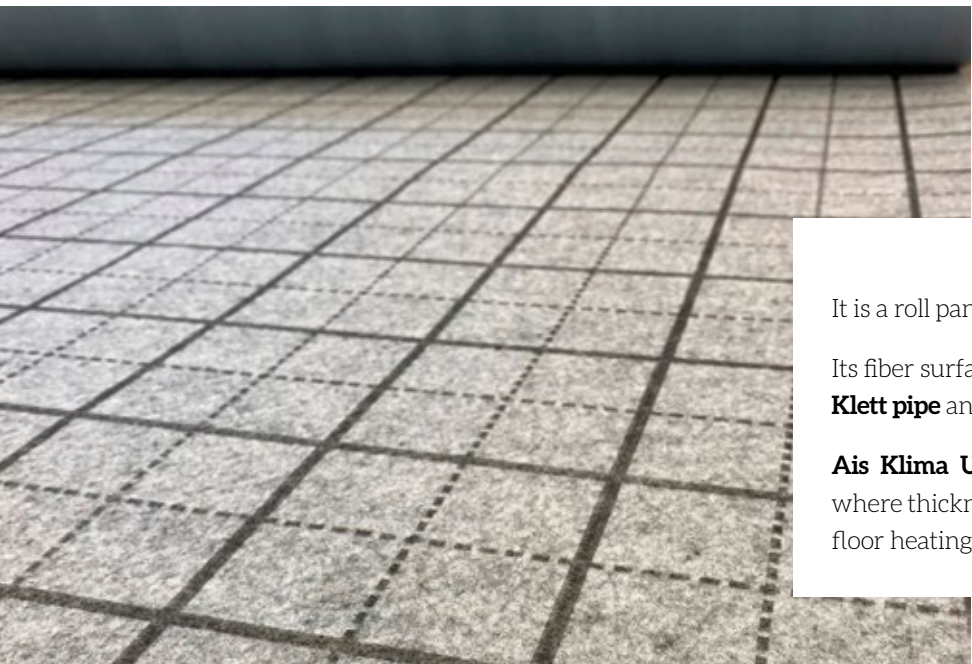
It is a **7-layer pipe including the velcro self-adhesive taping**. It is made of PERT material (temperature resistant polythylene) that gives it great flexibility and incorporates an intermediate layer of EVOH as an Oxygen anti-diffusion barrier.

The 7 layers of the pipe include 3 intermediate bonding polymer layers plus 4 functional layers which are:

- **PERT base tube**, fully optimised for underfloor heating, is designed to withstand up to 70C continuously and is more flexible than other materials making it faster to install and with higher performance than required in this type of installation.
- **PERT outer tube** provides mechanical protection against external agents and work processes, in addition to serving as the basis for the self-adhesive tape.
- **Self-adhesive velcro taping** allows for quick tube installation by simple contact with the Klett insulation panel.
- **EVOH middle layer** acts as an oxygen diffusion barrier.



Not only is it highly innovative, **it offers excellent efficiency and real benefits.**



Ultraslim Panel AIS Klett, for building sites with height limitations

It is a roll panel with a **2 mm. ultra low profile of thickness.**

Its fiber surface and grid **allow immediate adhesion of the Klett pipe** and a quick and comfortable installation.

Ais Klima Ultraslim is especially indicated for renovations where thickness of assembly is very much reduced and under-floor heating-cooling solution is a critical factor.

AIS Klett Insulation Panel



Reference	Description	Dimensions and benefits	Min. Unit for sale
Klett Graphite insulation panel. Graphite G-EPS roll panel for self-adhesive pipe			
412.07825N	<ul style="list-style-type: none">For mezzanines on heated premises.Thermal and acoustic insulation by impact and air.	25-2 mm. 12 x 1 m. R-value = 0,78 m²K/W ΔLw = 28 dB	12 m²
412.12540N	<ul style="list-style-type: none">For low on the ground, on premises NOT heated.Thermal insulation.	40-2 mm. 8 x 1 m. R-value = 1,25 m²K/W	8 m²

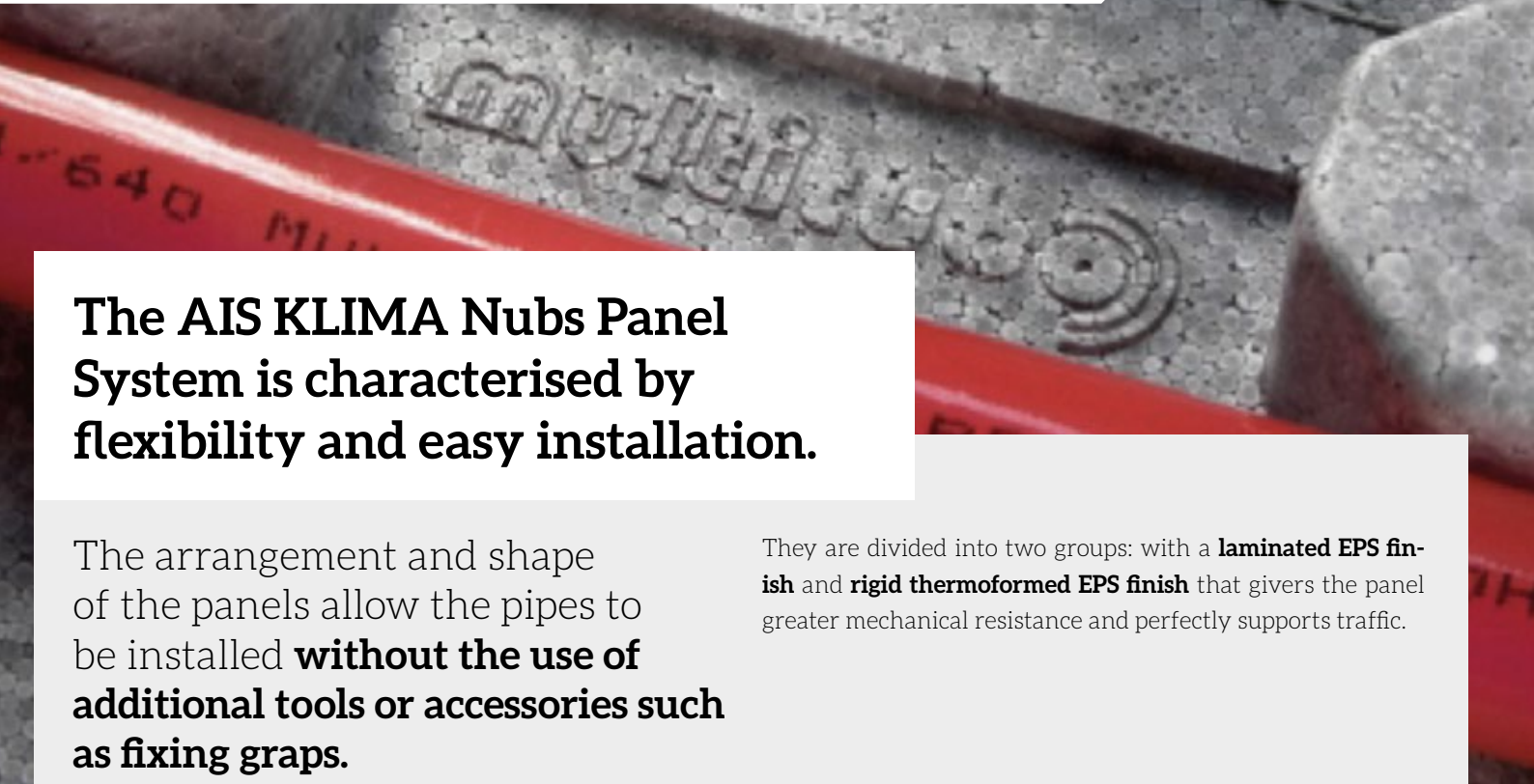


Klett white Insulating panel EPS. White EPS roll panel, for self-adhesive pipe			
412.05625N	<ul style="list-style-type: none">Thermal insulation, acoustic impact and air insulation	25-2 mm. 12 x 1 m. R-value = 0,56 m²K/W ΔLw = 28 dB	12 m²

AIS Klett Pipe



Reference	Description	Dimensions and benefits	Min. Unit for sale	Pallet or units per box
Klett PE-RT EVOH self-adhesive natural white pipe				
116.16240	<ul style="list-style-type: none">7-layer tube with Oxygen diffusion barrier, application class 4: underfloor, heating and low temperature radiators.	16 x 2,00	240 m	1680 m
116.16500		16 x 2,00	500 m	2000 m



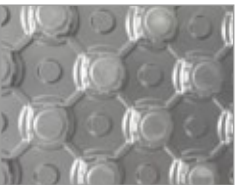
The AIS KLIMA Nubs Panel System is characterised by flexibility and easy installation.

The arrangement and shape of the panels allow the pipes to be installed **without the use of additional tools or accessories such as fixing graps.**

They are divided into two groups: with a **laminated EPS finish** and **rigid thermoformed EPS finish** that gives the panel greater mechanical resistance and perfectly supports traffic.



AIS Nubs Insulation Plate



Reference	Dimensions and benefits	Min. Unit for sale
Nubs Insulation Plate. Thermoformed EPS		
411.2542	1400 x 800 mm (1,12 m²) Base thickness = 20 mm. Total thickness = 42 mm. R-value = 0,75 m²K/W	11,2 m²



Nubs Insulation Plate. Laminated EPS		
411.2546	1350 x 750 mm (1,01 m²) Base thickness = 17 mm. Total thickness = 46 mm. R-value = 0,75 m²K/W	14,17 m²
411.2563	1350 x 750 mm (1,01m2) Base thickness= 34 mm. Total thickness = 63 mm. R-value = 1,25m²K/W	9,11 m²



Choose the best AIS pipes for your installations

5 layer pipes. They are made of PERT (temperature resistant polyethylene) material that gives them great flexibility and they incorporate an intermediate layer of EVOH as an antidiffusion oxygen barrier.

AIS KLIMA Pipe



Reference	Dimensions and benefits	Min. Unit for sale	Pallet or units per box
PE-Xa EVOH pipe, natural white colour, with oxygen diffusion barrier			
117.16240	16 x 2,00	240 m	3840 m
117.16500	16 x 2,00	500 m	3000 m



Reference	Dimensions and benefits	Min. Unit for sale	Pallet or units per box
PE-Xa EVOH pipe, natural white colour, with oxygen diffusion barrier			
113.20500	20 x 2,00	500 m	3000 m



Reference	Description	Dimensions and benefits	Min. Unit for sale
PERT-AL-PERT Multilayer pipe			
101.16500	<ul style="list-style-type: none">With Oxygen diffusion barrier.PERT-AL- PERT multilayer pipe.	16 x 2,00	500 m



UltraSlim Panel. For Klett self-adhesive pipe.			
412.303046	<ul style="list-style-type: none">Ultra low profile especially suitable for refurbished.With adhesive layer, for direct installation on the existing floor.	20 x 1,05 m. Thickness: 2 mm	21 m ²



In this solution, the pipe is replaced by a 3 mm thick cable, so that it is an electric underfloor heating, which allows reaching the comfort temperature in a very short time.

The cable is attached to a mesh or included inside forming a roll of aluminium, so that **the thickness of the set is very small.**

The roll unfolds and places directly on the slab so that **you can cut and rotate** when reaching walls and obstacles, **allowing a faster and more comfortable installation.**

It is especially **indicated for small spaces** to get a quick feeling of comfort is an important added value, like the bathrooms or bedrooms of a hotel.

Electric Radiant Floor



Reference	Description	Dimensions and benefits	Min. Unit for sale
Electric radiant floor			
413.160305	<ul style="list-style-type: none">Thin bed heating mat.Power 160 W/m².Installation of mortar and under tile floor.	4 m ² (length 8m; width 0,5m). Cable 3mm. Available from 1m ² to 12m ² (on request consult)	1 unit

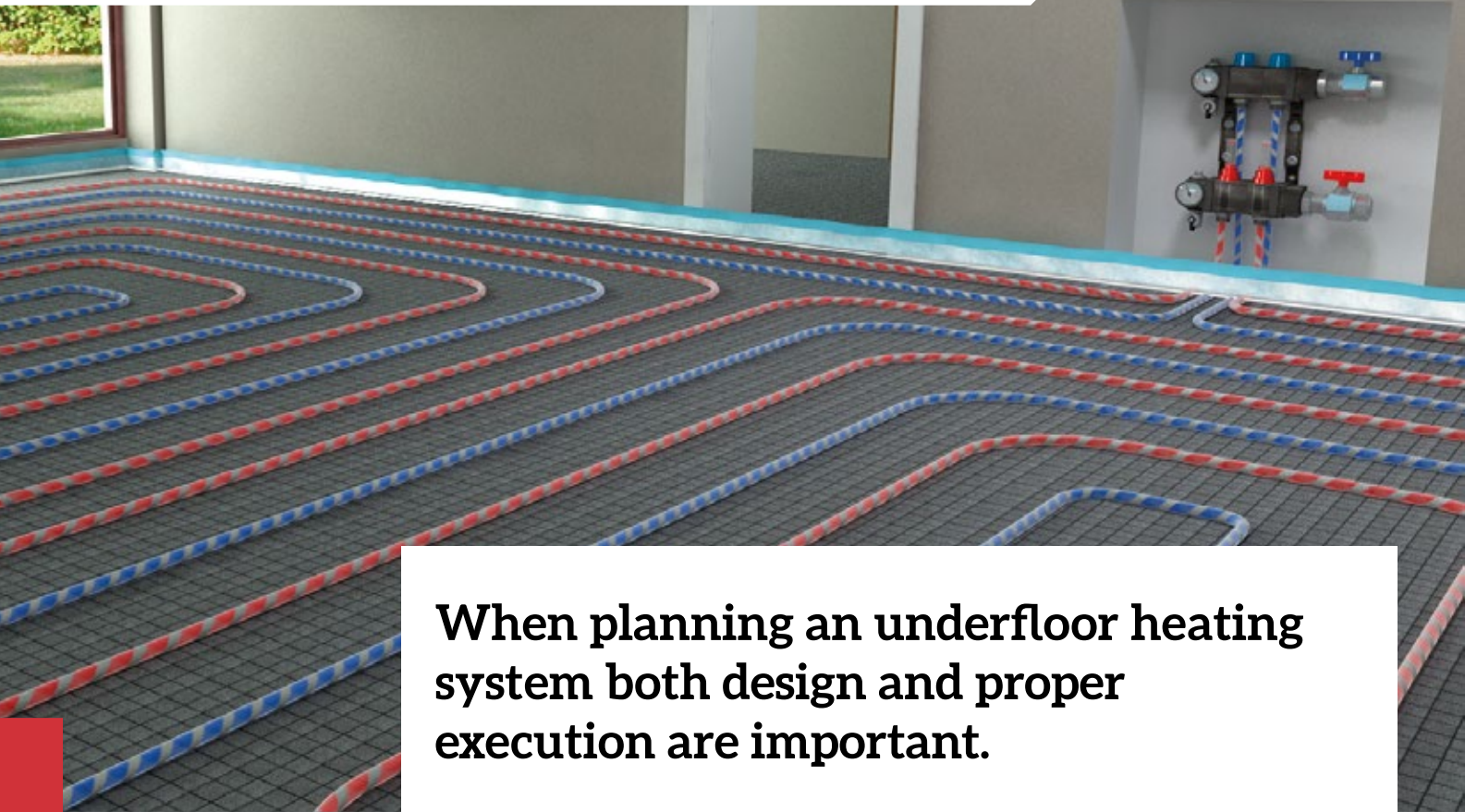


Electric radiant floor			
413.140305	<ul style="list-style-type: none">Aluminium thin bed heating mat.Power 140 W/m².Installation of foam an under wooden floor or carpet.	4 m ² (length 8m; width 0,5m). Cable 3mm. Available from 1m ² to 12m ² (on request consult)	1 unit



Reference	Description	Dimensions and benefits	Min. Unit for sale
Programmable digital thermostat			
423.220003	<ul style="list-style-type: none">Programmable digital thermostat for electric underfloor heating.Includes soil probe and temperature limitations.	80,5 x 80,5 x 42,5 mm.	1 unit

AIS KLIMA Common Elements



When planning an underfloor heating system both design and proper execution are important.

However, **the installation must be well managed** so that everything works correctly and the system is energy efficient, in addition to providing the desired comfort. For this we need elements that complete said installation, such as **regulation and control for heating and cooling**, which allows us to offer different solutions depending on the needs of each installation. In this sense, **the flow and return manifolds are used to open or close each circuit**, facilitating its hydraulic regulation, and the low depth recessed boxes allow to house the manifolds and the rest of the accessories for regulation. To use profesional tools that simplify the installation, contributing to the reduction of the time spent. To install underfloor heating systems, it is also necessary

Control



Room Thermostat with cable

Reference	Description	Min. Unit for sale
421.0014	<ul style="list-style-type: none">Heating / Cooling.230V.5 x 1,5 mm hose installation is recommended.	1 unit

AIS KLIMA COMMON ELEMENTS

Control



Room thermostat with cable F-C

Reference	Description	Min. Unit for sale
422.3012	<ul style="list-style-type: none">Heating / Cooling.	1 unit



Programmable wireless digital thermostat

Reference	Description	Min. Unit for sale
422.34230	<ul style="list-style-type: none">Heating / Cooling.230VLCD screen of 58x34mm.Scheduling for weekdays, weekends or entire week.Up to 28 memories.	1 unit



Wireless digital programmable thermostat

Reference	Description	Min. Unit for sale
422.5080	<ul style="list-style-type: none">Heating / Cooling.Local operation and online WebApp.	1 unit



Wireless room thermostat

Reference	Description	Min. Unit for sale
422.5081	<ul style="list-style-type: none">Heating / Cooling.Local operation and online WebApp.	1 unit



Thermostatic actuator

Reference	Description	Min. Unit for sale
421.1114L	<ul style="list-style-type: none">For the regulation of the underfloor heating-cooling circuit.Includes connection piece and cable.230V.	1 unit



Thermostatic actuator with micro

Reference	Description	Min. Unit for sale
422.5090	<ul style="list-style-type: none">Thermostatic actuator 230 V4 wires with micro.For the regulation of the underfloor heating-cooling circuit.Includes connection piece and cable.230V.	1 unit



Underfloor heating connecting unit refrigerant. Power supply 230 V.

Reference	Description	Min. Unit for sale
422.3222	<ul style="list-style-type: none">For 6 zones- 12 actuators.	1 unit
422.3223	<ul style="list-style-type: none">For 10 zones- 18 actuators.	1 unit



Control



Reference	Description	Min. Unit for sale
Underfloor heating connecting unit refrigerant		
422.5073	<ul style="list-style-type: none">Wireless. 4 zones - 6 actuatorPower supply 230V.WebApp Control	1 unit
422.5074	<ul style="list-style-type: none">Wireless. 8 zones - 12 actuator.Power supply 230V.Web App. Control.	1 unit

Manifold and manifold wall cabinets



Reference	Dimensions and benefits	Min. Unit for sale
Underfloor heating manifold box		
422.435110	46x71x11-15 cm (2-4 loops)	1 unit
422.535110	60x71x11-15 cm (4-6 loops)	1 unit
422.680110	75x71x11-15 cm (6-9 loops)	1 unit
422.835110	90x71x11-15 cm (9-12 loops)	1 unit
422.1035110	103x71x11-16 cm (12-15 loops)	1 unit

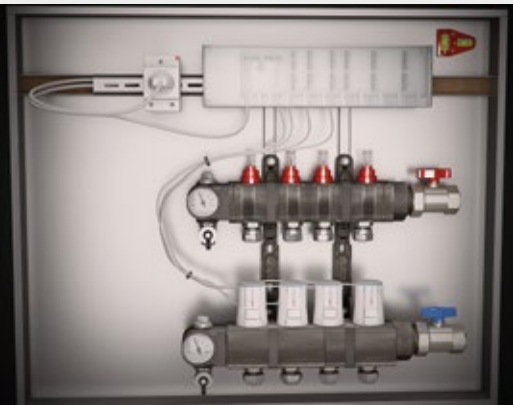


Low depth manifold box		
422.435082	43x71x08-13 cm (2-4 loops)	1 unit
422.535082	53x71x08-13 cm (4-6 loops)	1 unit
422.680082	68x71x08-13 cm (6-9 loops)	1 unit
422.835082	83x71x08-13 cm(9-12 loops)	1 unit
422.1035082	103x71x08-13 cm (12-15 loops)	1 unit

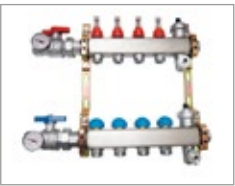
Directsite pre-assembled manifold

- Directsite pre-assembled manifold in underfloor heating manifold box.
- Manifold material reinforced polyamide or stainless steel.
- Standard box or low depth manifold box.
- Number of outputs and configurable control components according to the project.

Request it, according to the needs of your project!



Manifold and manifold cabinets



Reference	Description	Min. Unit for sale
1" stainless steel manifold with automatic drain - 3/4" M eurocone outlets		
422.1002	2 loops	1 unit
422.1003	3 loops	1 unit
422.1004	4 loops	1 unit
422.1005	5 loops	1 unit
422.1006	6 loops	1 unit
422.1007	7 loops	1 unit
422.1008	8 loops	1 unit
422.1009	9 loops	1 unit
422.1010	10 loops	1 unit
422.1011	11 loops	1 unit
422.1012	12 loops	1 unit

Composition: Return manifold with thermostatic valves, automatic drain and drain cock. Flow manifold with flow metre (0,1 a 5 l/min), automatic drain and drain cock. 1" red and blue dial keys with thermometres. Isophonic support. Eurocone output of ¾ Male. 50mm outlet spacing. Does not include adaptors.

AIS Air plastic kit manifold module tube 2 circuit

422.122	<ul style="list-style-type: none">Body 1 1/4".Connection to main pipes in 1 1/4"M.Supply and return circuits 3/4"M.	1 unit
---------	---	--------



AIS Air additional circuit module

422.111	<ul style="list-style-type: none">Body 1 1/4".Connection to power and return circuits 3/4" M.	1 unit
---------	--	--------



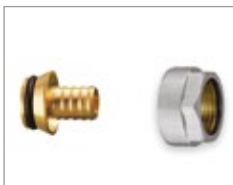
Reference	Dimensions and benefits	Min. Unit for sale
Set 2 sphere wrenches for plastic modular manifold		
421.114100	1 1/4" H modular fitting - 1" H.	1 unit





AIS KLIMA COMMON ELEMENTS

Manifolds and wall cabinets



Reference	Dimensions and benefits	Min. Unit for sale	Min. Package qty.
Monoblock eurocone adapter for PEX y PERT pipes			
421.8162034	16 x 2,00 - 3/4"	2 units	50 units
421.8202034	20 x 2,00 - 3/4"	2 units	50 units



Monoblock eurocone adapter for multilayer pipe			
421.70316	16 x 2,00 - 3/4"	2 units	50 units

Installation accessories



Reference	Dimensions and benefits	Min. Unit for sale
AIS KLIMA adhesive panel union tape coil		
412.4866	Coil 48mm x 66m	1 unit



Anti-moisture film		
420.5012	4mx25m. Thickness 0,2mm.	10m



Perimeter skirting with plastic skirt and scotch tape		
420.150850	150mm x 8mm x 50m	50 m



Reference	Min. Unit for sale
Polyamide guide curve for polyethylene pipe. Suitable for 16 mm - 20mm pipe	
421.1418	25 units
421.2022	25 units



Fluidizing additive for mortar. 25 Kg Carafe	
460.1080	1 unit



AIS KLIMA COMMON ELEMENTS

Hidraulic Regulation



Reference	Dimensions and benefits	Min. Unit for sale
Two-way zone valve 2 MM motorised 230 V		
422.6223034	3/4"	1 unit
422.62230100	1"	1 unit



By-pass valve perimeter pressure 0,25 bar		
422.6025100	1"	1 unit



Drive group and mix to fixed point		
422.6000	-	1 unit

Tools



Reference	Dimensions and benefits	Min. Unit for sale
Tube uncoilers for multilayer ergonomic		
360.1140360	Height 870 - 1122 mm Øext 1140 mm, Øint360 mm	1 unit



Tube cutter scissors from 16 to 26 mm with support to facilitate calibration		
360.61632	from 16 to 26 mm	1 unit



Replacement blade for tube cutter scissors to diam. 40mm		
360.816400	Up to diam. 40 mm.	1 unit



Pipe cutter for PEX y Multilayer		
360.81640	Up to diam. 40 mm.	1 unit

Replacement blade for scissors		
360.616260	-	1 unit



TECHNICAL AIS SUPPORT SERVICE

With the **Technical Support Service**, the **AIS team** of experts will be at your disposal to advise you throughout the entire project, from the design phase to marketing and post-sale.

It is remote project, you can count on our support through our **online applications and tools**.

- **Services for installers:** On site support, technical assistance, documentation, budgets... we are here to advise you.
- **Services for prescribers:** You will be able to count on our calculation applications and online tools, BIM data and any other technical service in which we can advise you.

You can request our technical support for your project by contacting us by email at: info@aisconcept.com

AIS Support, next to you at every moment



Training during the 3 stages

- Plastic pipes
- Plumbing installations
- Heated floor facilities



At the beginning of the project

- Design and optimisation in the facilities
- Project quotation
- Insulation reports
- Condensation



During the project

- Online support
- Stakeout on site



After the project

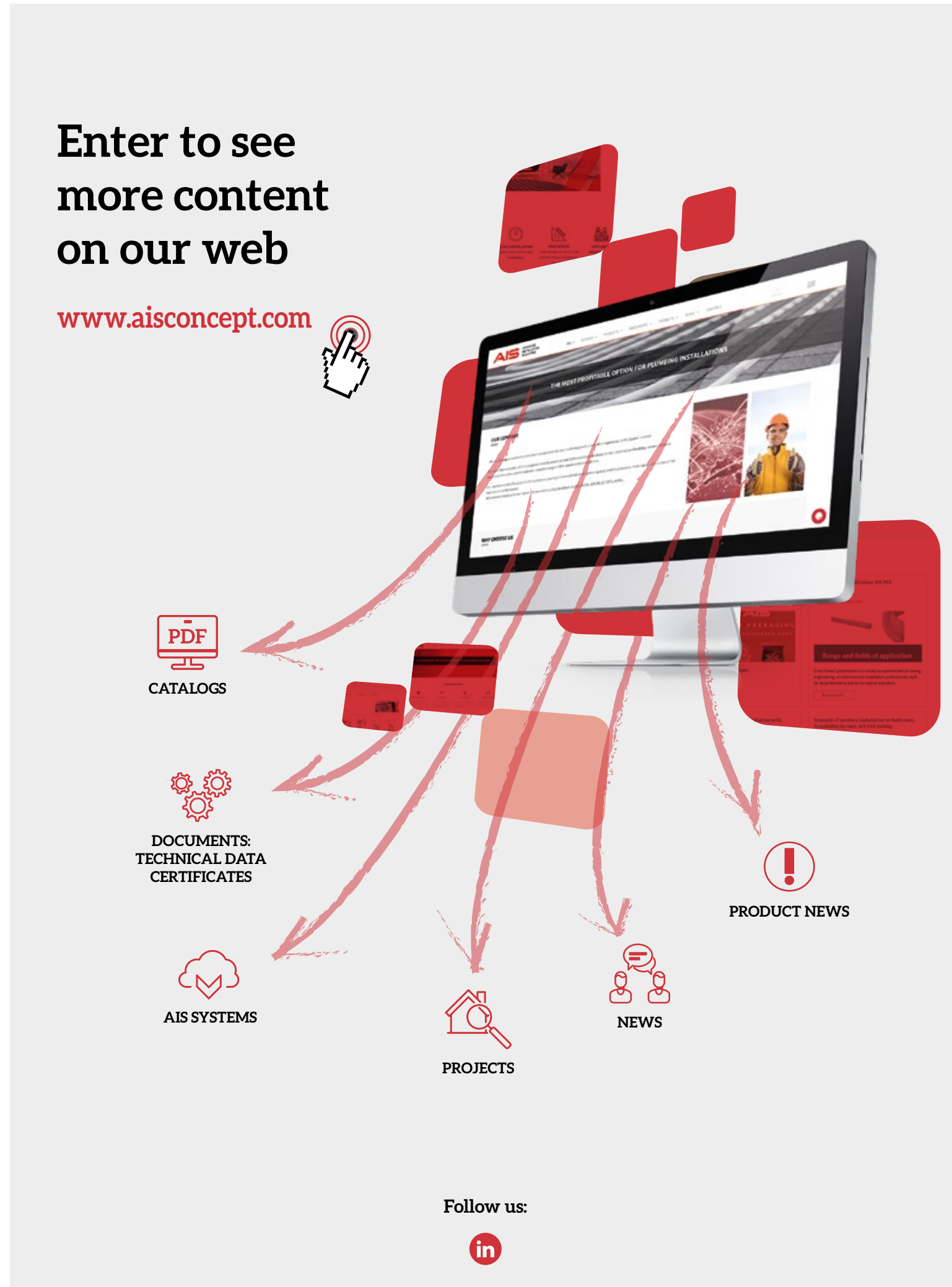
- Online after sales
- Material guarantee

Enter to see
more content
on our web

www.aisconcept.com



Follow us:





AIS KLIMA

MULTICAPAS INDUSTRIAL GmbH

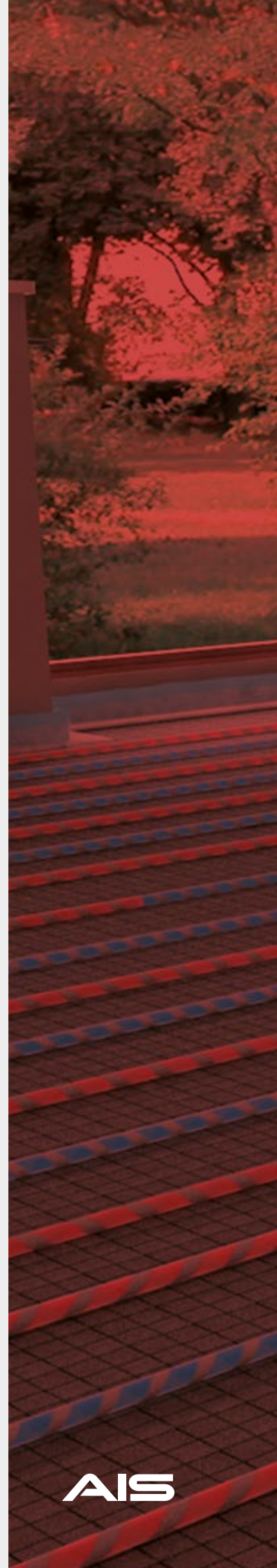
Handwerkerring 28

63776 Mömbris, Germany

Tel.: +49 6029 993039-0

info@aisconcept.com

www.aisconcept.com



AIS